

59 Municipalities
975 Precincts
372 Voting locations

607 Candidates
(includes write-in and withdrawn candidates)
445 Municipal
42 Judicial
120 School Board/education

62 Issues
2 State
2 County (Tri-C and the Port Authority)
32 Municipal
2 School District
1 Library (Cleveland Library System)
23 local liquor options

Turnout: 31%

273,393 Total ballots cast

188,809 Election Day (69%)

81,575 Vote by mail and early voters (30%)

191,818 Election Day & 3,009 Provisional (70%)

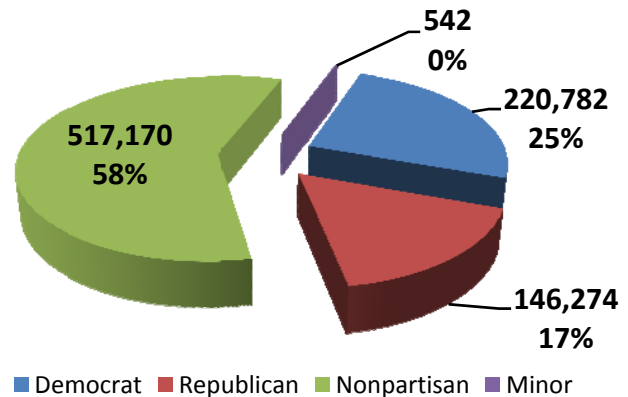
884,768 Registered voters

220,782 Democrat

146,274 Republicans

517,170 Nonpartisan

542 Minor party



Vote by Mail

92,416: Ballots Requested

10% of registered voters requested ballots

Ballot Requests by Party:

Dem.	Rep.	Nonpartisan	Minor party
44,998	26,633	20,679	106

4,805: Early, in-house voters

82,575: Ballots Returned (includes challenged ballots and ballots that arrived after the postmark deadline)

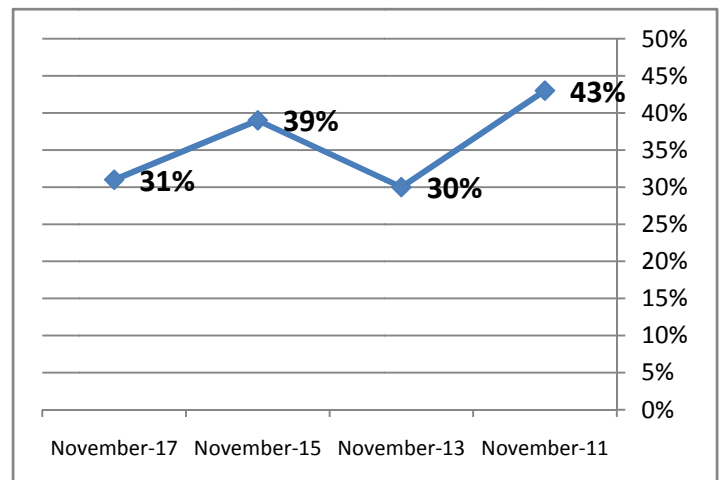
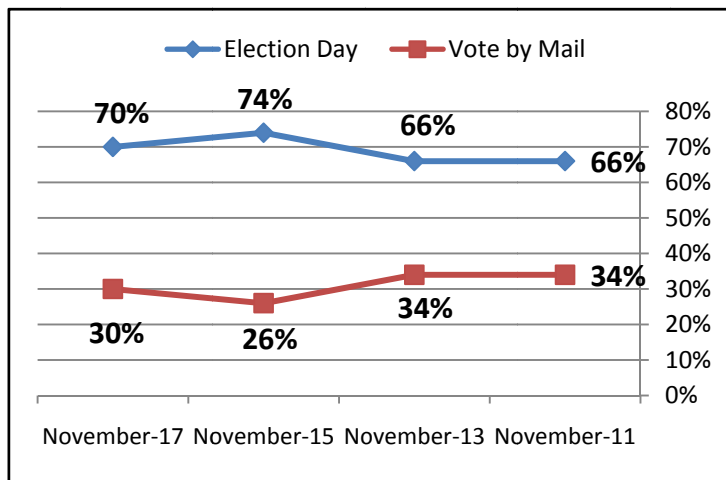
89% of requested ballots were returned

Ballot Returns by Party:

Dem.	Rep.	Nonpartisan	Minor party
41,974	24,807	15,694	100

Election Day and Vote by Mail Odd Year Comparisons

Voter Turnout History in Odd years



2015 November General

840,662 Registered Voters
323,799 Total ballots cast
84,548 Cast by mail (includes early voters)
4,117 Cast early in-house

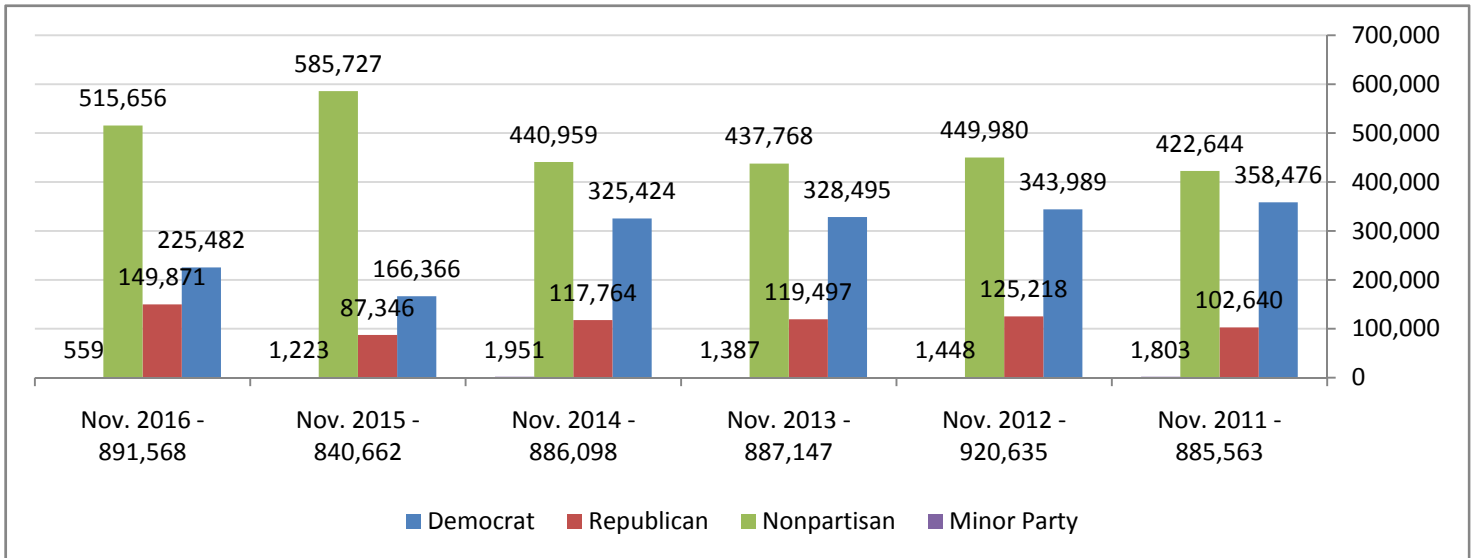
2013 November General

887,147 Registered Voters
262,264 Total ballots cast
90,392 Cast by mail (includes early voters)
2,873 Cast early in-house

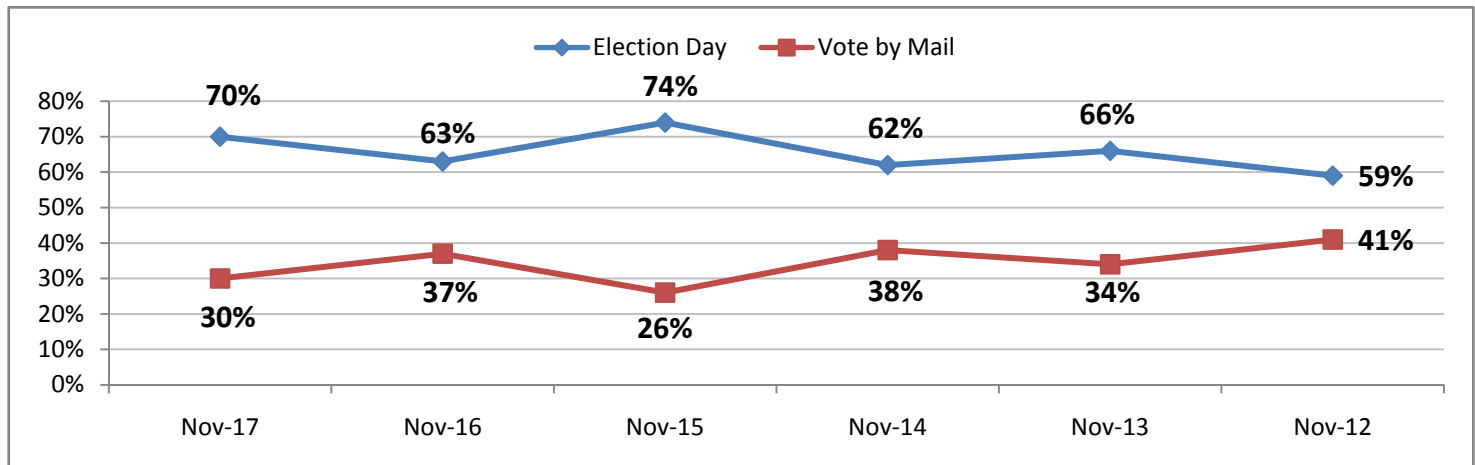
2011 November General

885,563 Registered Voters
384,202 Total ballots cast
131,167 Cast by mail (includes early voters)
4,174 Cast early in-house

Voter Registration History 2011 to 2016



Election Day and Vote by Mail Comparisons 2011 to 2017



Voter Turnout History 2011 to 2017

